

**ark progetti +**  
mandatario  
architetto cunial giamarino  
mandatario  
architetto fabbiani giampaolo  
mandatario  
architetto pendolfin andrea  
mandatario  
ingegnere carlo franceschini  
mandatario  
ingegnere sara prete  
mandatario  
ingegnere forner simone  
mandatario  
geologo michelini guida  
mandatario  
perito i. gherlinelli lucia

31030 borso del grappa, prov.ve. via capitale del  
31030 borso del grappa, via fornero nuovo 320  
tel.uff. +39 0423 961971  
fax +39 0423 914830  
e-mail info@arkprogetti.it

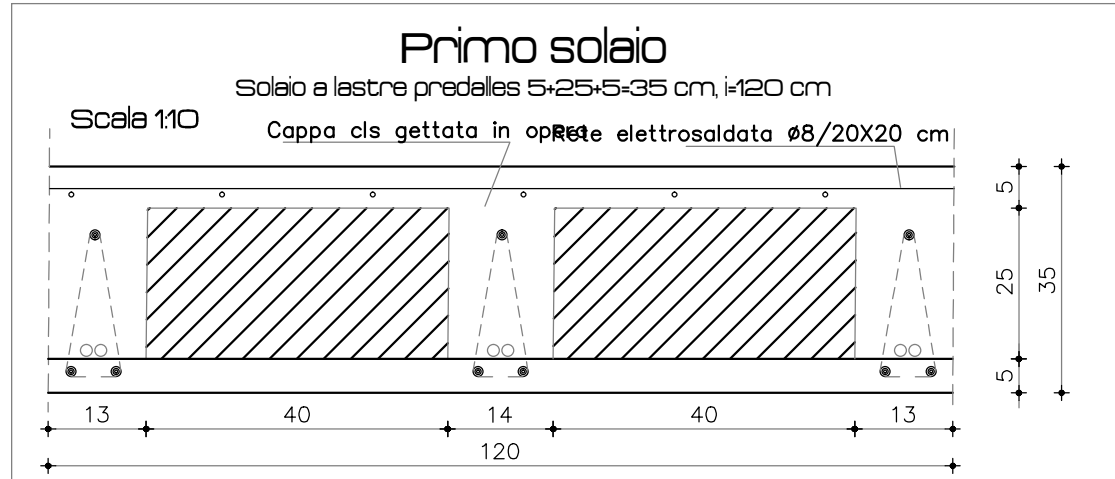
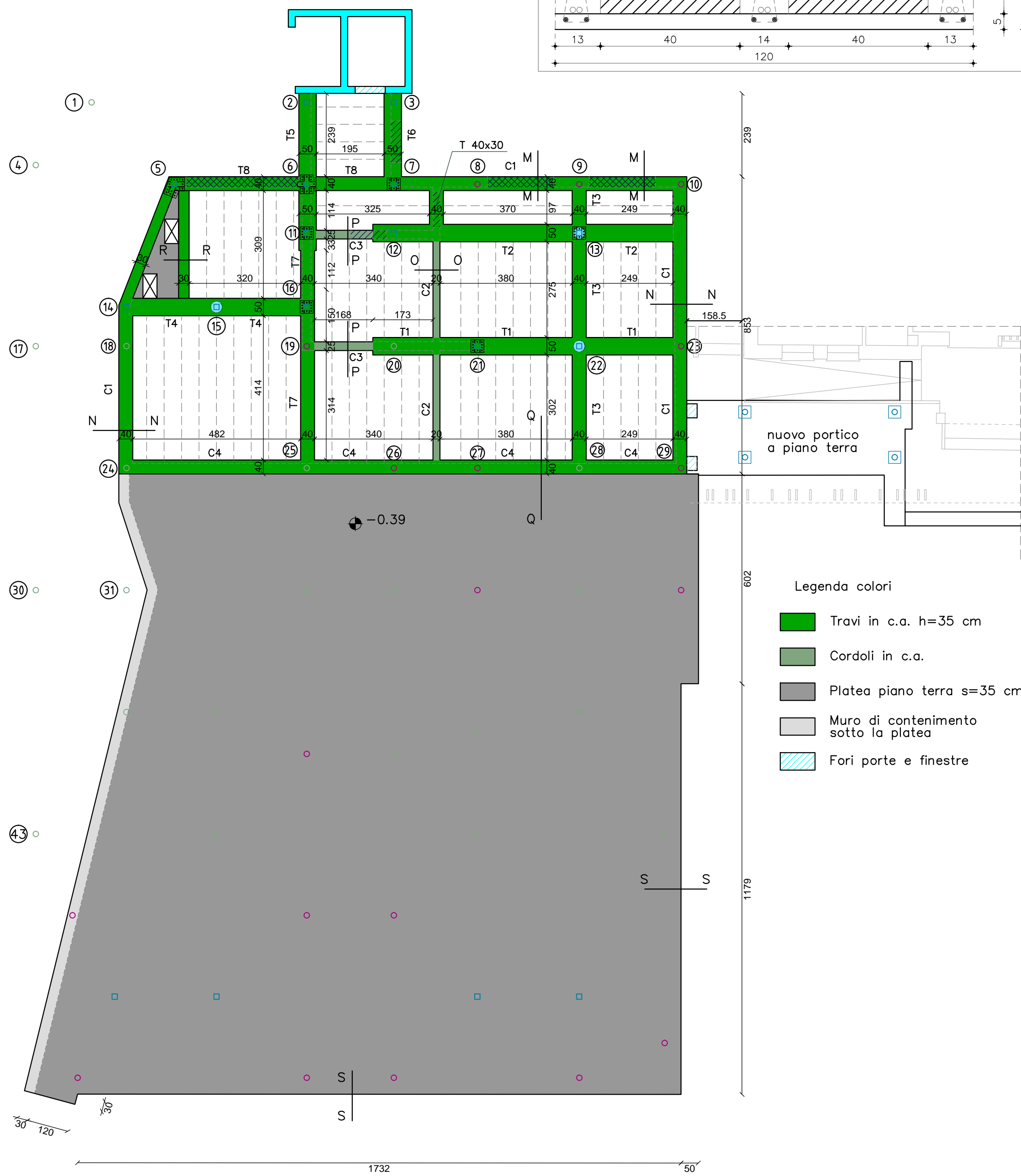
CODICE CUP: G48H18000000001

AMPIAMENTO SCUOLA  
PRIMARIA DI MONTE DI MALO  
DESTINATO A SCUOLA  
SECONDARIA

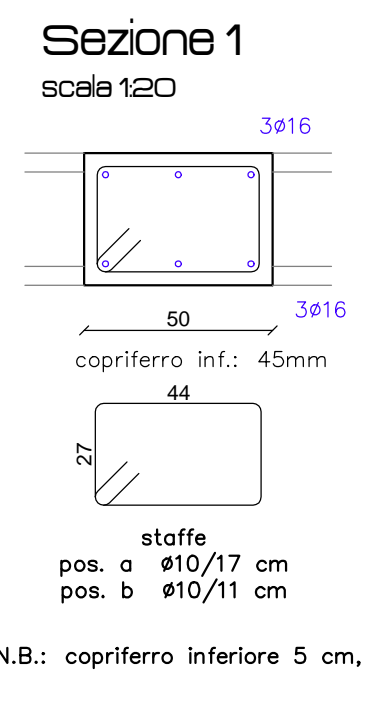
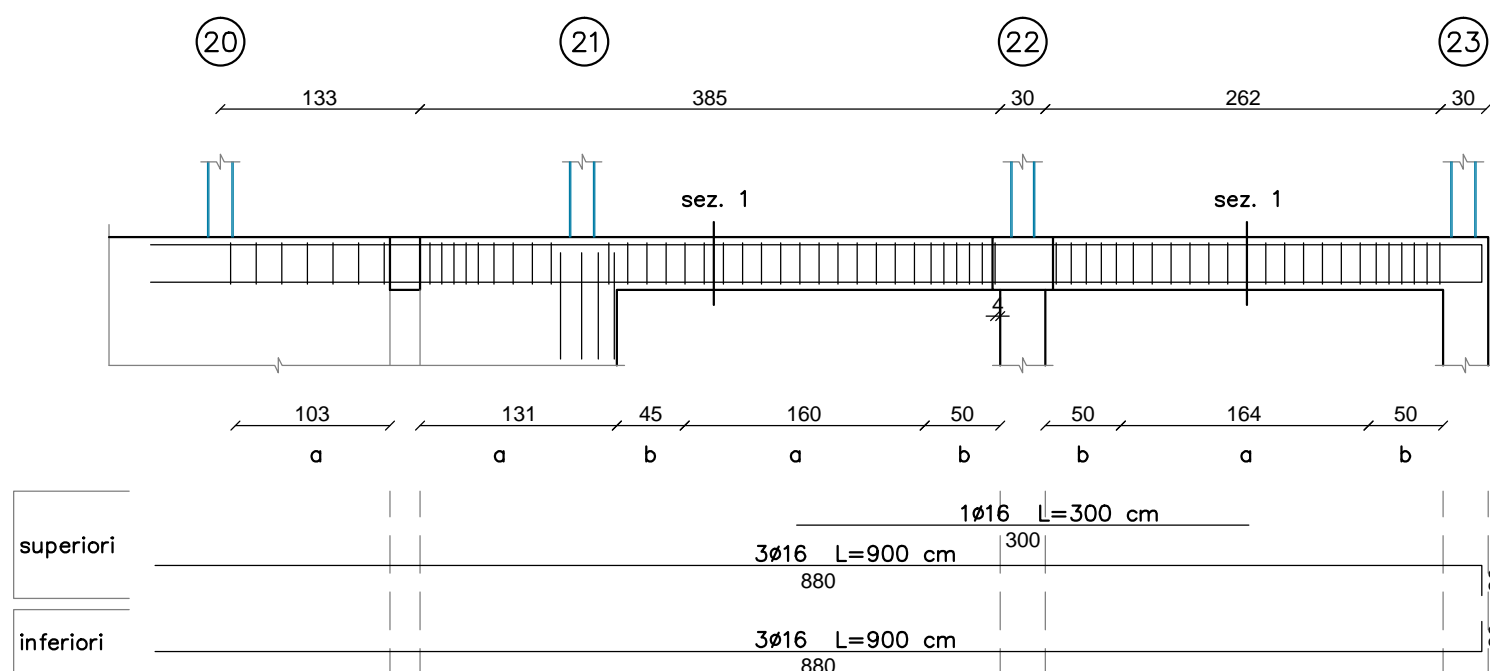
COMUNE MONTE DI MALO  
COMMITTENTE AMMINISTRAZIONE COMUNALE  
DATA SETTEMBRE 2019  
AGGIORNAMENTO  
EMISIONE A SEGUITO VALIDAZIONE  
CODICE 1219  
ELABORATI  
PRIMO SOLAIO 1100  
DETTAGLI COSTRUTTIVI 120

S.4

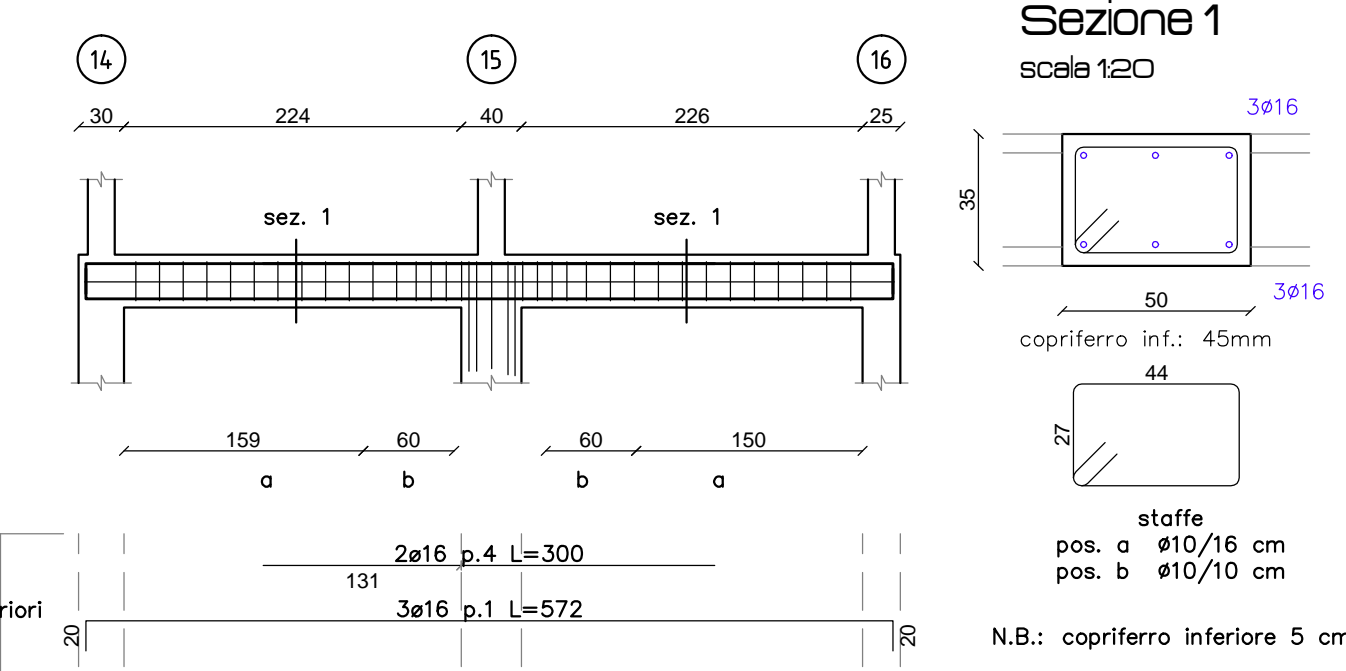
Pianta platea piano terra  
e solaio piano interrato  
scale 1100



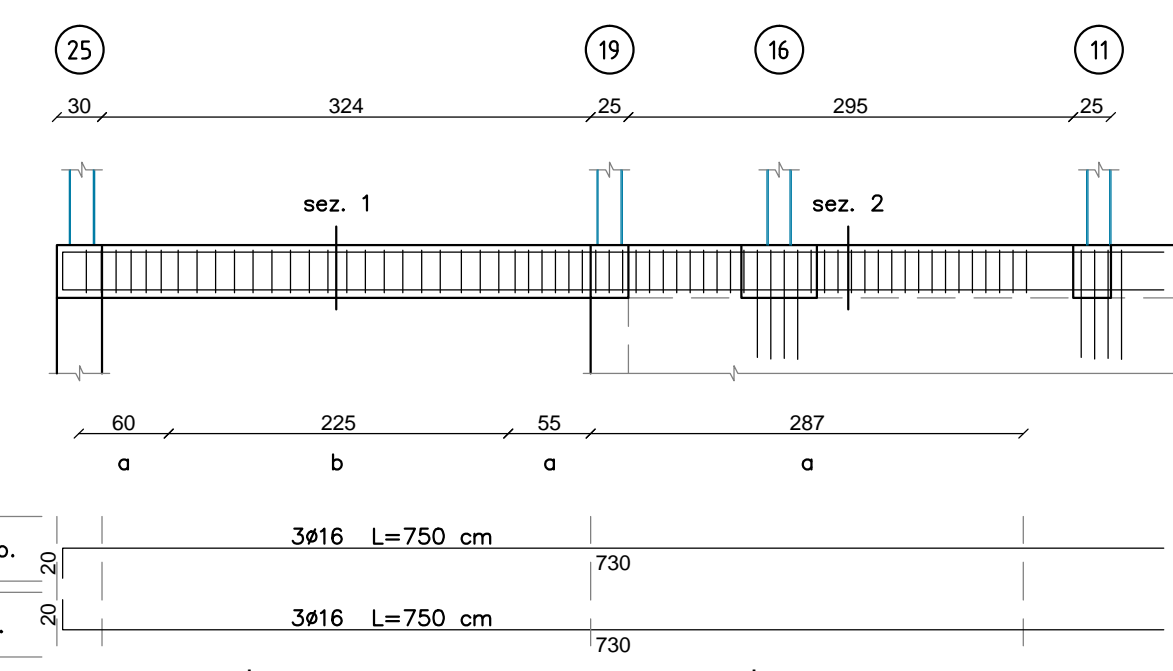
Primo solaio: trave T1  
fil 20-21-22-23  
scale 150



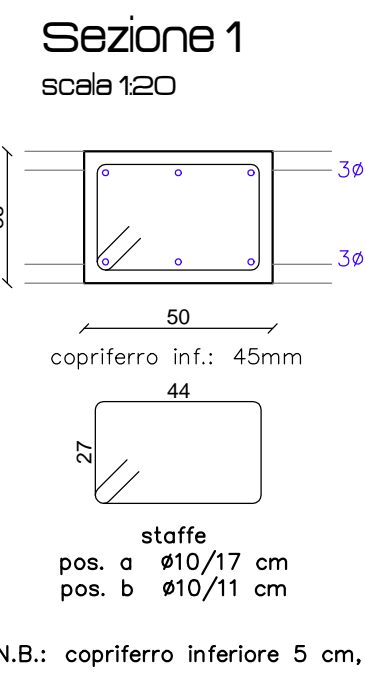
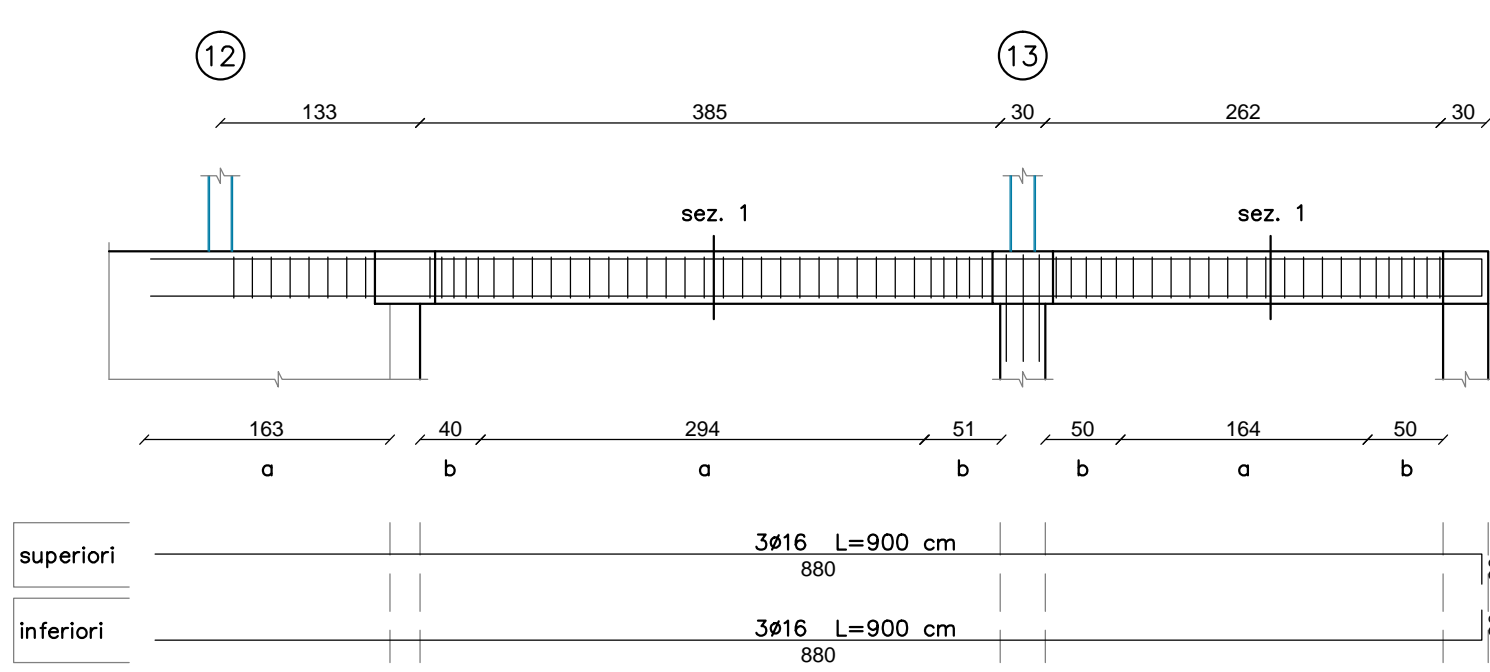
Primo solaio: trave T4  
fil 14-15-16  
scale 150



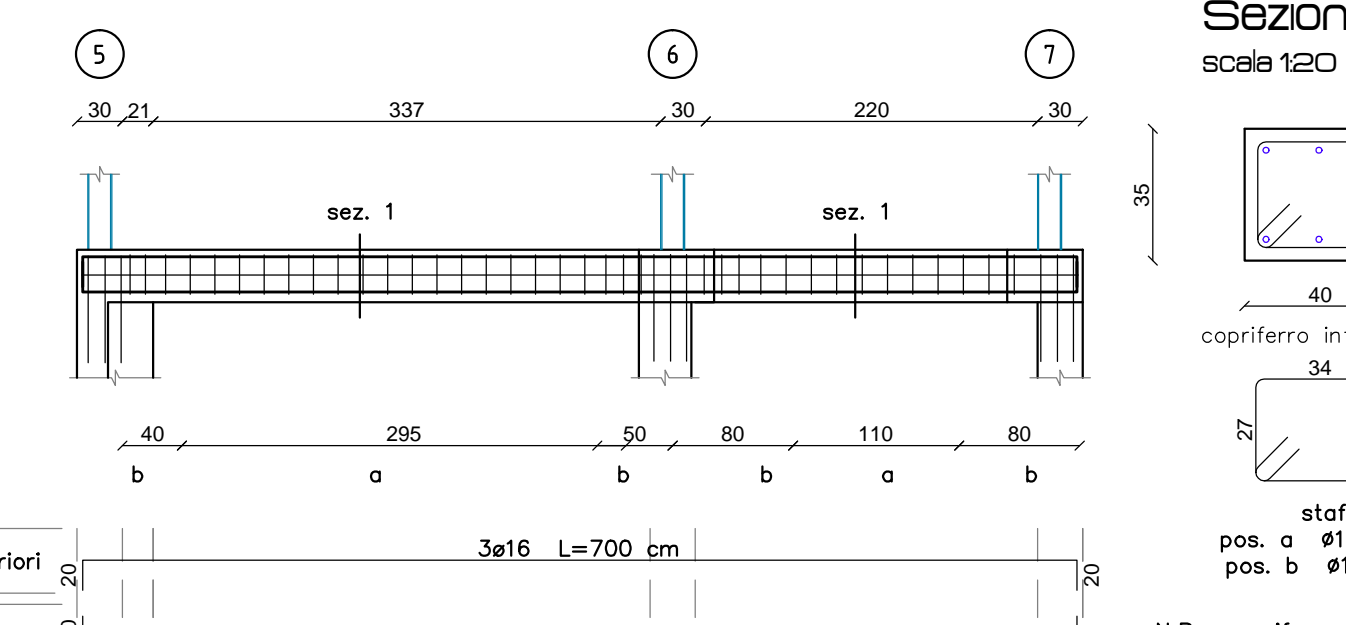
Primo solaio: trave T7  
fil 25-19-16-11  
scale 150



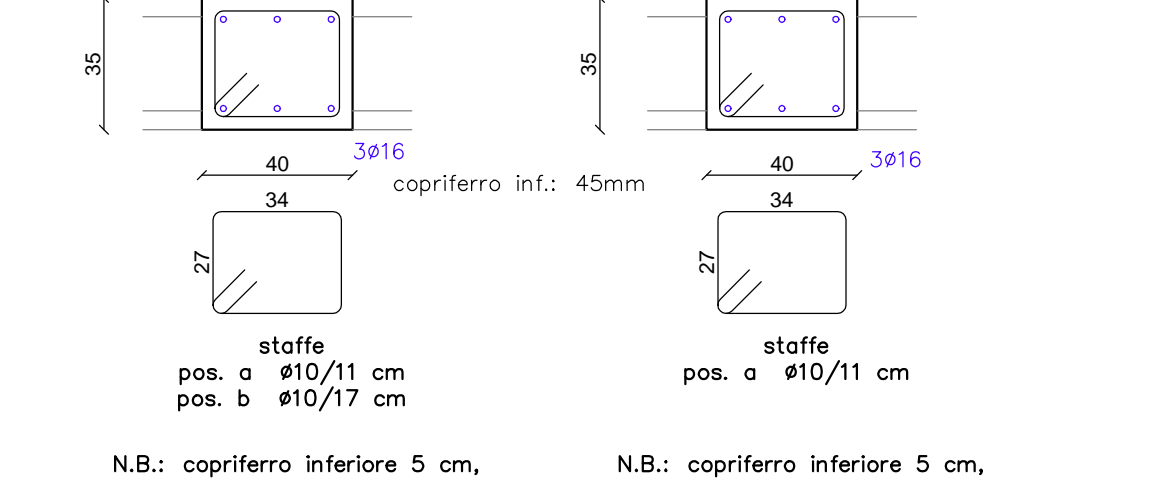
Primo solaio: trave T2  
fil 12-13  
scale 150



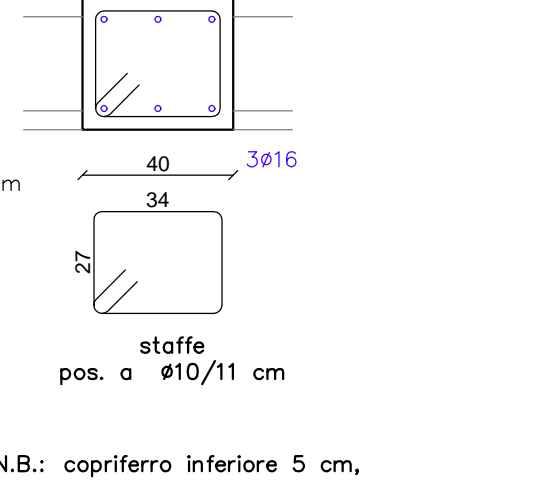
Primo solaio: trave T8  
fil 5-6-7  
scale 150



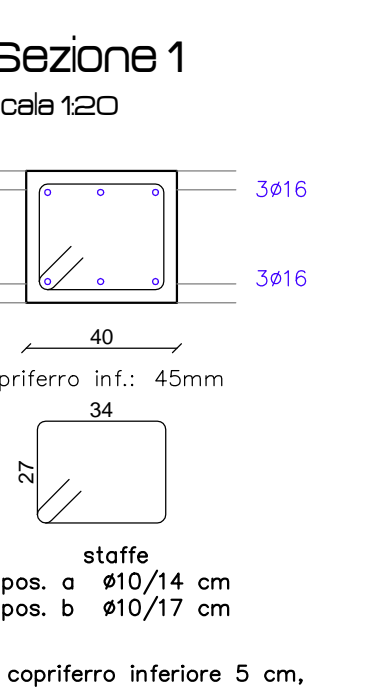
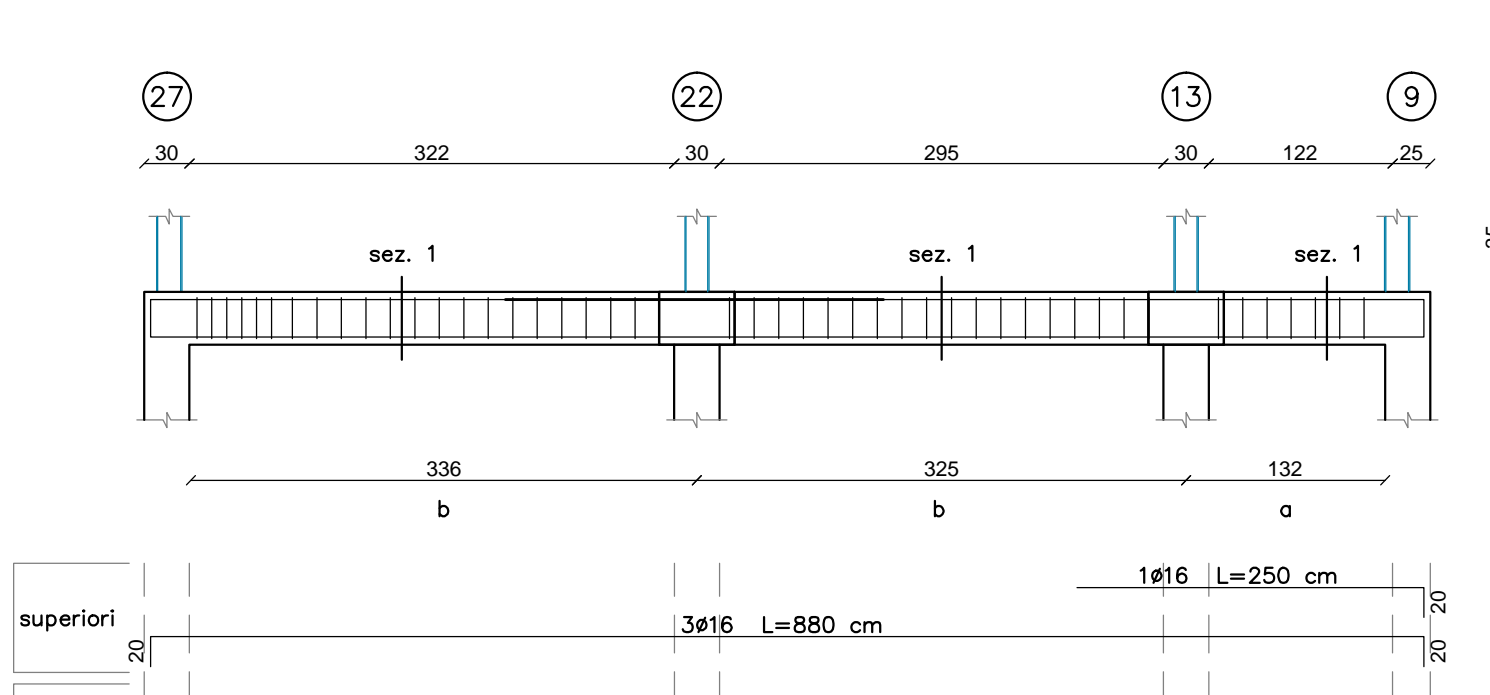
Sezione 1  
scale 120



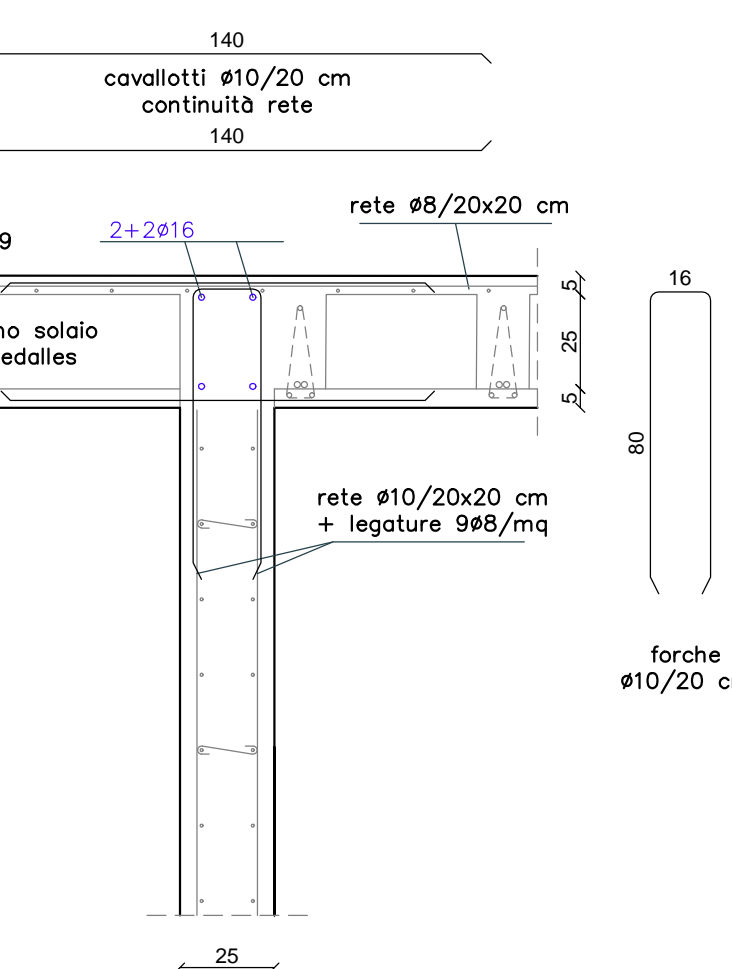
Sezione 2  
scale 120



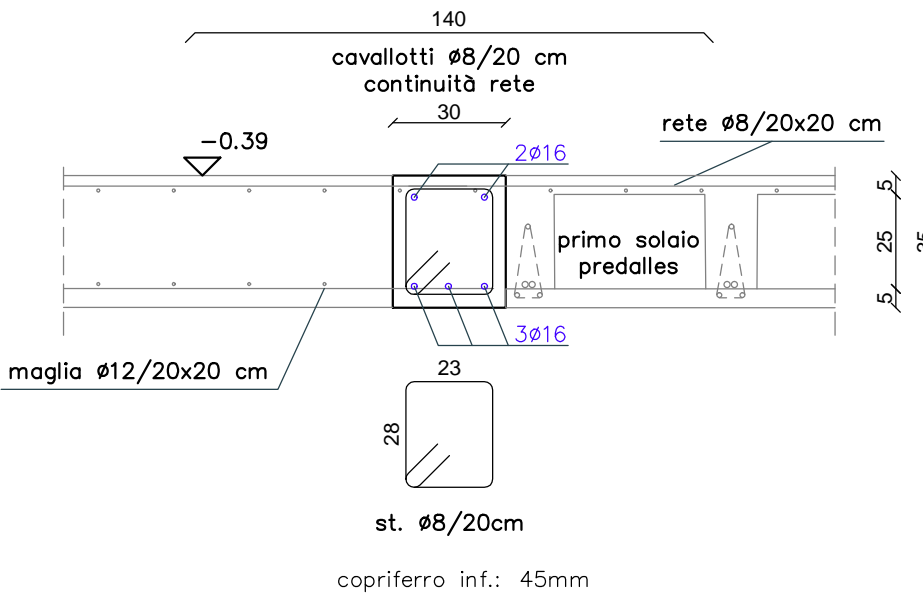
Primo solaio: trave T3  
fil 27-22-13-9  
scale 150



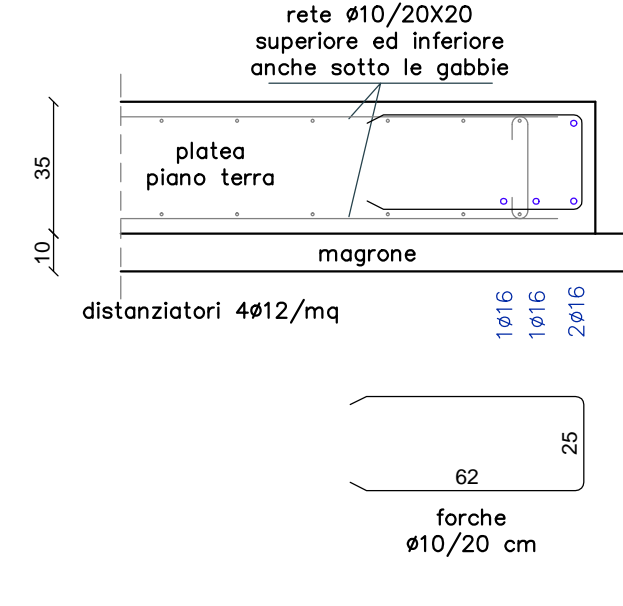
Sezione P-P  
condolo tipo C3 (25x35 cm)  
scale 120



Sezione R-R  
condolo solaio  
scale 120

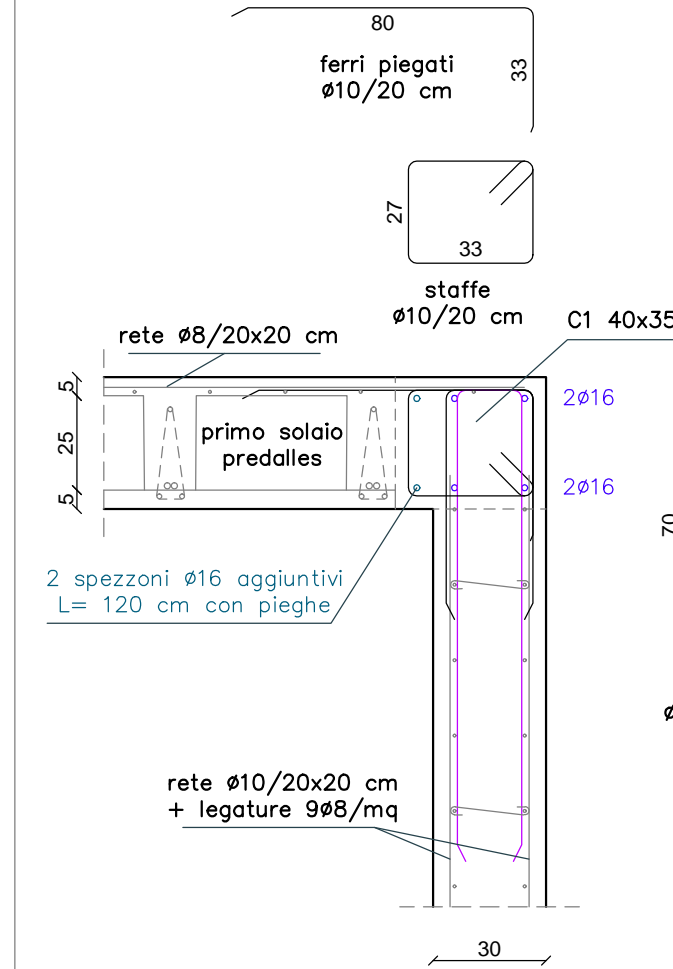


Sezione S-S  
Sezione tipo bordo platea  
scale 120

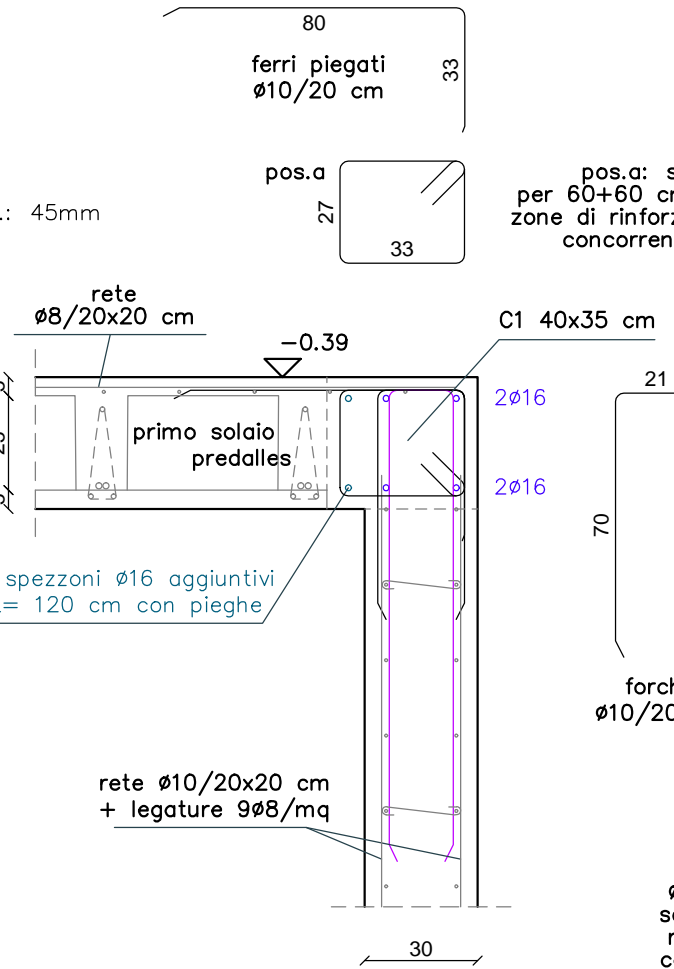


Sezione N-N

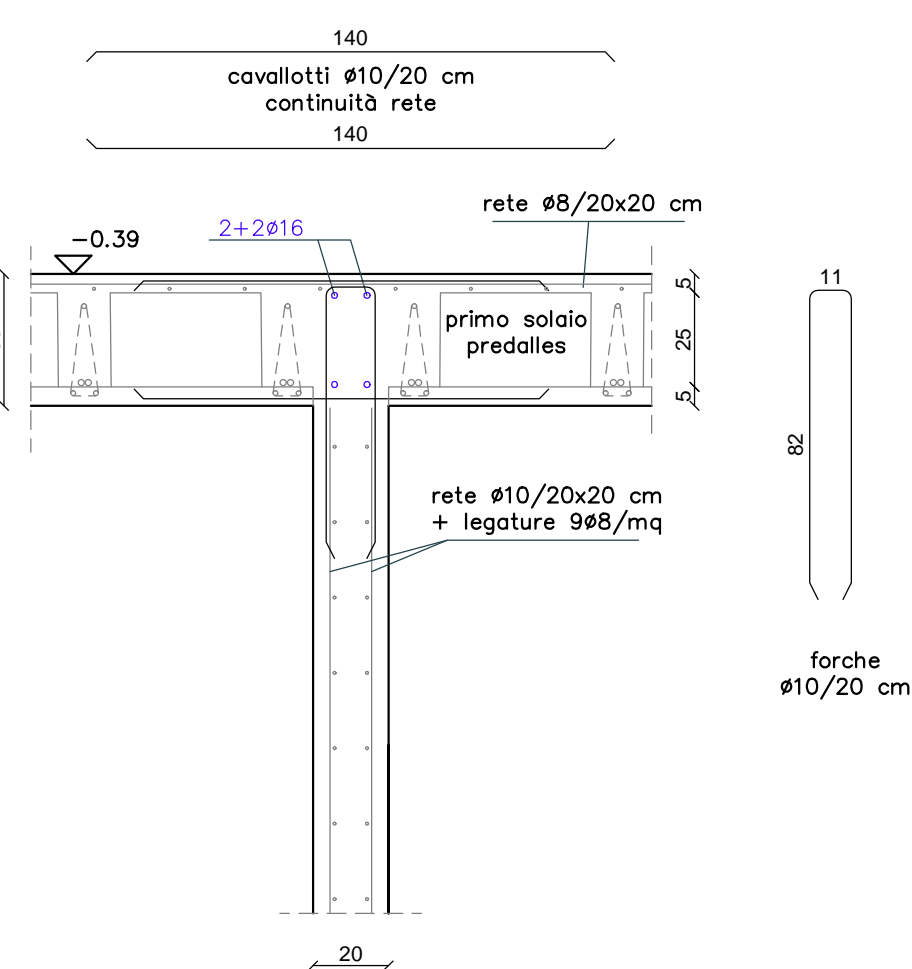
Sezione generica  
condolo tipo C1 (30x30 cm)  
scale 120



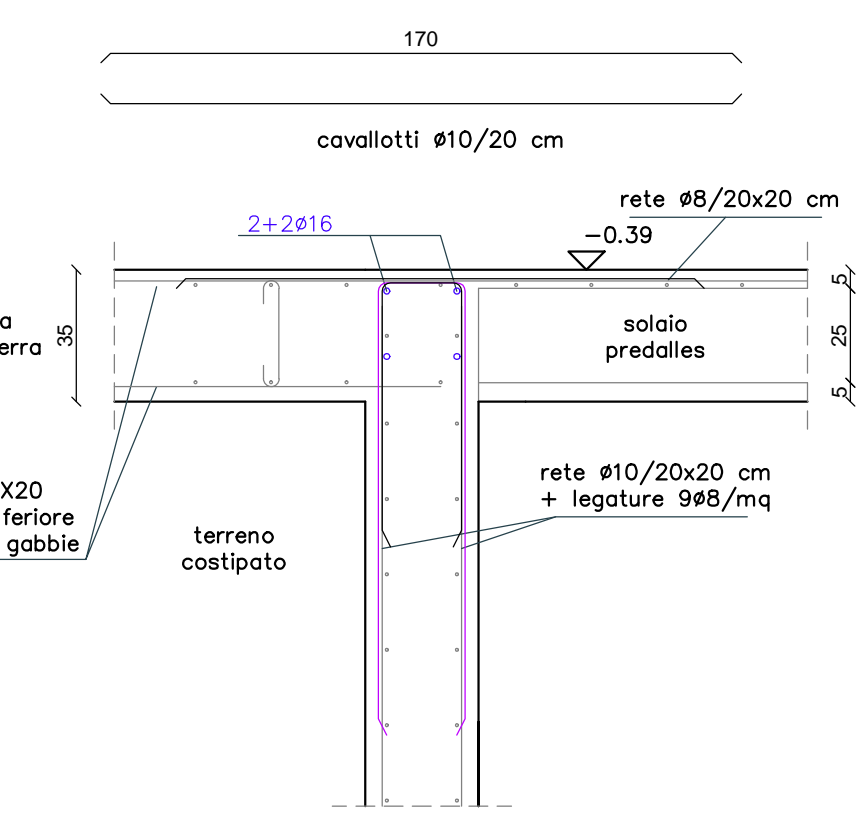
sezione in corrispondenza  
delle colonne in acciaio  
condolo tipo C1 (30x30 cm)  
scale 120



Sezione O-O  
condolo tipo C2 (20x30 cm)  
scale 120

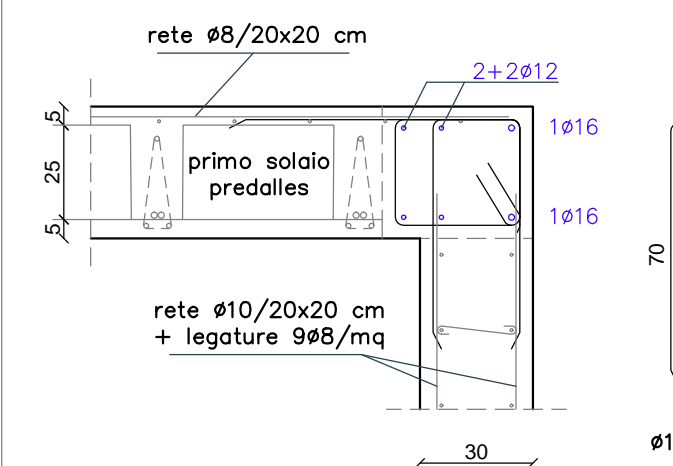


Sezione Q-Q  
condolo tipo C4  
scale 120

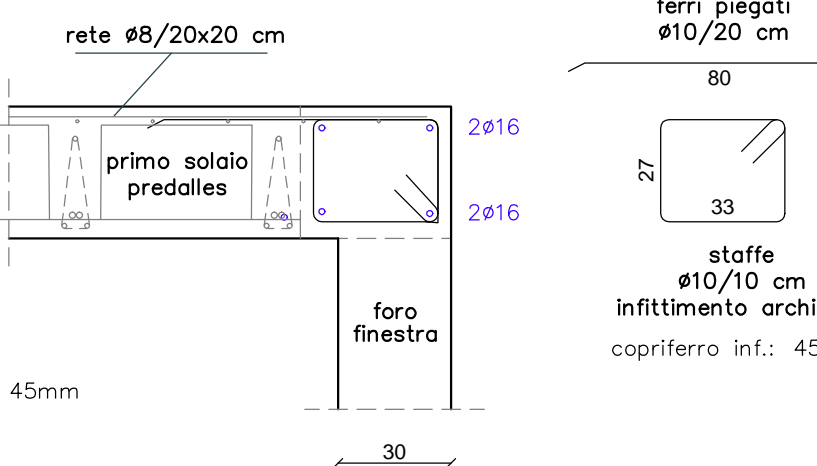


Sezione M-M

Sezione generica  
anchitrave porta su esterno e finestra  
scale 120



Sezione su apertura  
anchitrave porta e finestra  
scale 120



Nota: le quote altimetriche sono  
indicative e devono essere verificate  
in cantiere dalla D.L.

MATERIALI IMPIEGATI			
ACCIAIO:			
TONDINO ACCIAIOSO AD ADERENZA MIGLIORATA B450C			
CALCESTRUZZO:	CLASSE RESISTENZA	CLASSE ESPOSIZIONE	CLASSE CONSISTENZA
		EN206	
MACRONE	Rck 200 (C16/20)	XC2	S2
FONDAZIONI	Rck 300 (C25/30)	XC2	S3
PILASTRI, TRAVI, SETTI, SOLAI	Rck 350 (C28/35)	XC3	S4
GRADO COMPATTAZIONE Gc > 0.97			
ACCIAIO DA CARPENTERIA:S275 jr			
BULLONI: classe 8.8			